

Safety valve 4171

- Male thread 3/4" x CU22 compressionfitting
- Opening pressure 2.0–4.0 bar
- High-lifting
- CE approved



Description

High-lifting safety valve.

Application

Heating and cooling systems.

Construction

Safety valve in brass with an EPDM diaphragm. Male thread 3/4" and compression fitting CU22.
Supplied with pre-set and non-adjustable opening pressure.

Marking

DN and flow direction arrow on body.
CE, EN 4126 and opening pressure on cap.

Approval

CE, EN 4126, EN 1491.

Maintenance

The safety valve is normally maintenance-free, but should be inspected for correct operation twice a year.

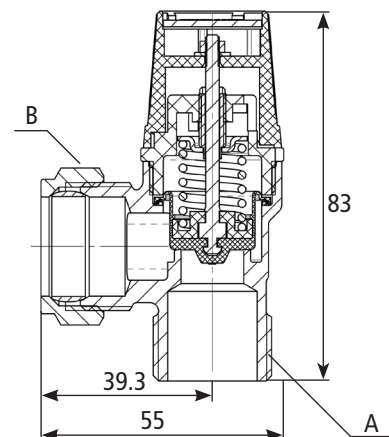
Installation

The safety valve must be installed according to local regulations and building codes.

Technical data

Body	Brass CW617N
Sleeve	Brass CW507L
Compression nut	Brass CW617N
Spring	Stainless steel AISI304
Diaphragm	EPDM
Seal	POM
Protection Cap	PA(Nylon)

Maximum working pressure:	10 bar
Maximum working temperature:	+120°C
Minimum working temperature:	+2°C
Opening pressure:	See table
Capacity in kW:	See table
Flow capacity:	See table



* In accordance with EN 1491

Item number	Description	A	B	Opening pressure (bar)	kW*	Flow (kg/h)*	Weight (kg)
0741710200	Safety valve 4171 2.0 Bar	3/4" M	CU22	2.0	70	110	0.19
0741710250	Safety valve 4171 2.5 Bar	3/4" M	CU22	2.5	85	136	0.19
0741710300	Safety valve 4171 3.0 Bar	3/4" M	CU22	3.0	95	142	0.19
0741710350	Safety valve 4171 3.5 Bar	3/4" M	CU22	3.5	110	158	0.19
0741710400	Safety valve 4171 4.0 Bar	3/4" M	CU22	4.0	120	178	0.19

All dimensions in millimeters

Subject to technical changes and corrections without notice